



Thank you for purchasing our product. Please follow our granite sink care instructions in order to maintain the quality of the product.
Attention! The product is covered by a lifetime warranty.

HOW TO USE: The sink meets the functional requirements in accordance with EN-13310 Standard.

Product Care Instructions

1. Although the surface of the sink is resistant to temperatures up to 180°C, remember that pots and pans may get hotter, do not place them directly on the sink. The risk of staining increases if a hot pot or pan is placed on the wet surface of the sink. Place a pot or pan on tray and let them cool.
2. Do not use any part of the sink as a chopping board.
3. Do not use cleaning agents which consist of bleach or abrasives. We also recommend you avoid using wire sponges or brushes.
4. Heavy items must be placed carefully into the sink.
5. Attention! Use only suitable cleaning agents for the daily care of the product in order to avoid permanent damage.
6. Avoid throwing sharp objects into the sink, this may damage the surface.
7. Avoid leaving corrosive foods such as salt, vinegar, mustard, red wine and black tea on the surface of the sink for extended periods time.

WARRANTY - Clearwater Products is liable for manufacturing and material defects of an item during the guarantee period. Guarantee is non transferable. In case of defect, report your claim to Clearwater Products .

Keep purchasing documents during the whole guarantee period.

WARRANTY IS NOT VALID for parts and accessories, enclosed in a sink kit. Defects that appear because of incorrect installation, maintenance of a sink or physical damage during operation.

Daily Cleaning

Clean the product daily with warm water and regularly use dish washing liquid and a soft cloth to remove dirt and to degrease, thoroughly rinse the sink afterwards. If you suffer from hard water, it's advisable to dry the bowl regularly to prevent oxidization and mineral deposits.

Removing Calcium / Mineral deposits

Take four tablespoons of Citric acid and dissolve into 200ml of hot water, add the same amount of white vinegar and give the mixture a stir. Close the plug on the sink and pour the mixture into the bowl, add hot water until the bowl's surface is covered. Then leave to rest for an hour. Drain off the liquid and rinse well with cold water, brush the surface lightly with soft brush.

Deep Clean

Pour hot water into the bowl until about two inches deep and add a dishwasher tablet. Allow this to rest for an hour or overnight if required. Rinse thoroughly after this process.

Sealing

Using a soft cloth, cover the surface with a thin layer of edible oil. Wipe any excess off with another cloth and allow to set for 2 hours. This will protect against dirt and keep the product in good condition and looking new.

clearwater®

Shannon Place, Tewkesbury Business Park, Tewkesbury, GL20 8SL
Telephone: 01684 299555 Website: clearwaterproducts.co.uk

INSTALLATION & CARE GUIDE



Dirt-repellent effect



Odour-free



Heat-proof 180°C



Food-safe



Hygienic Surface



Made to last



Stain-resistant



Impact-resistant



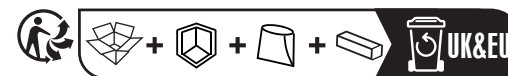
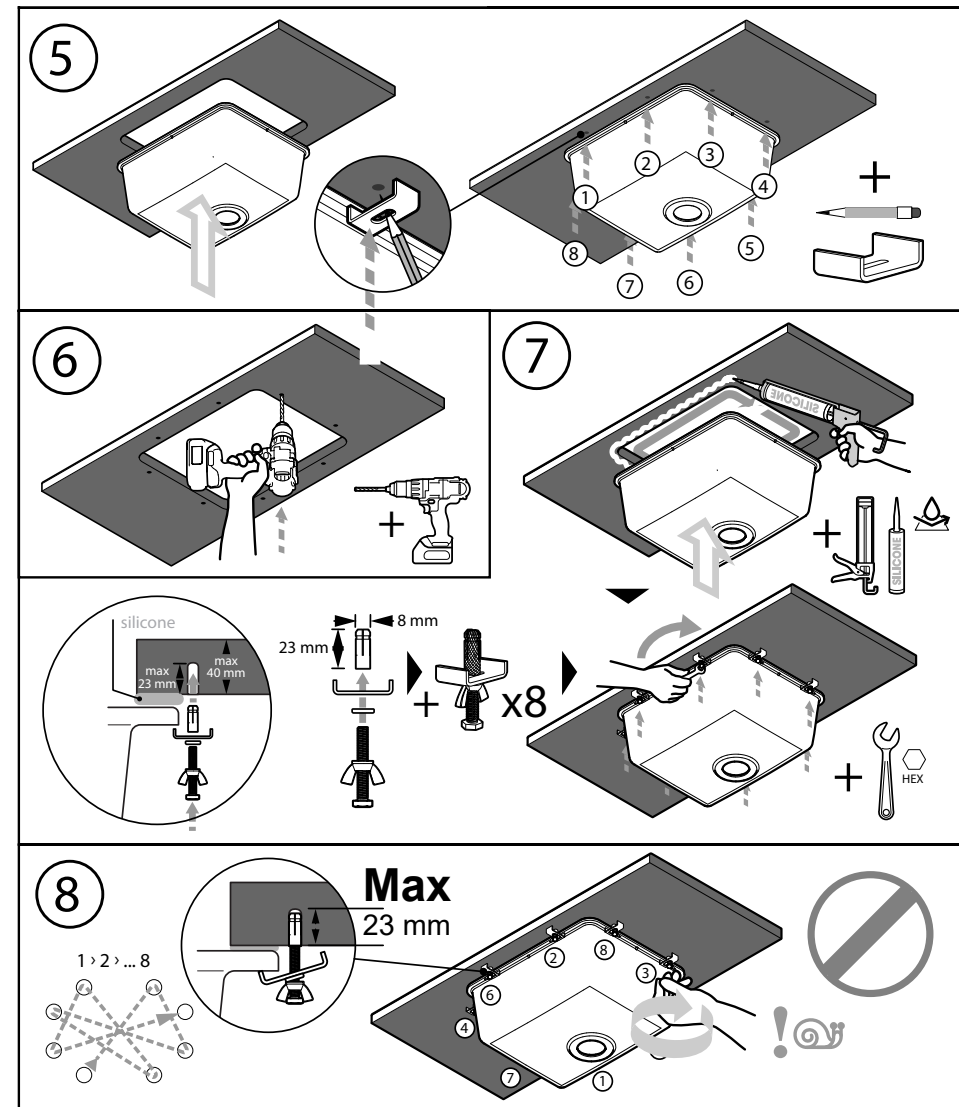
**Clearwater
Granite Care Set**
Ref. CLEG100 £40

Comprising of -
an alcohol based cleaner
a brightener and a
nano sponge



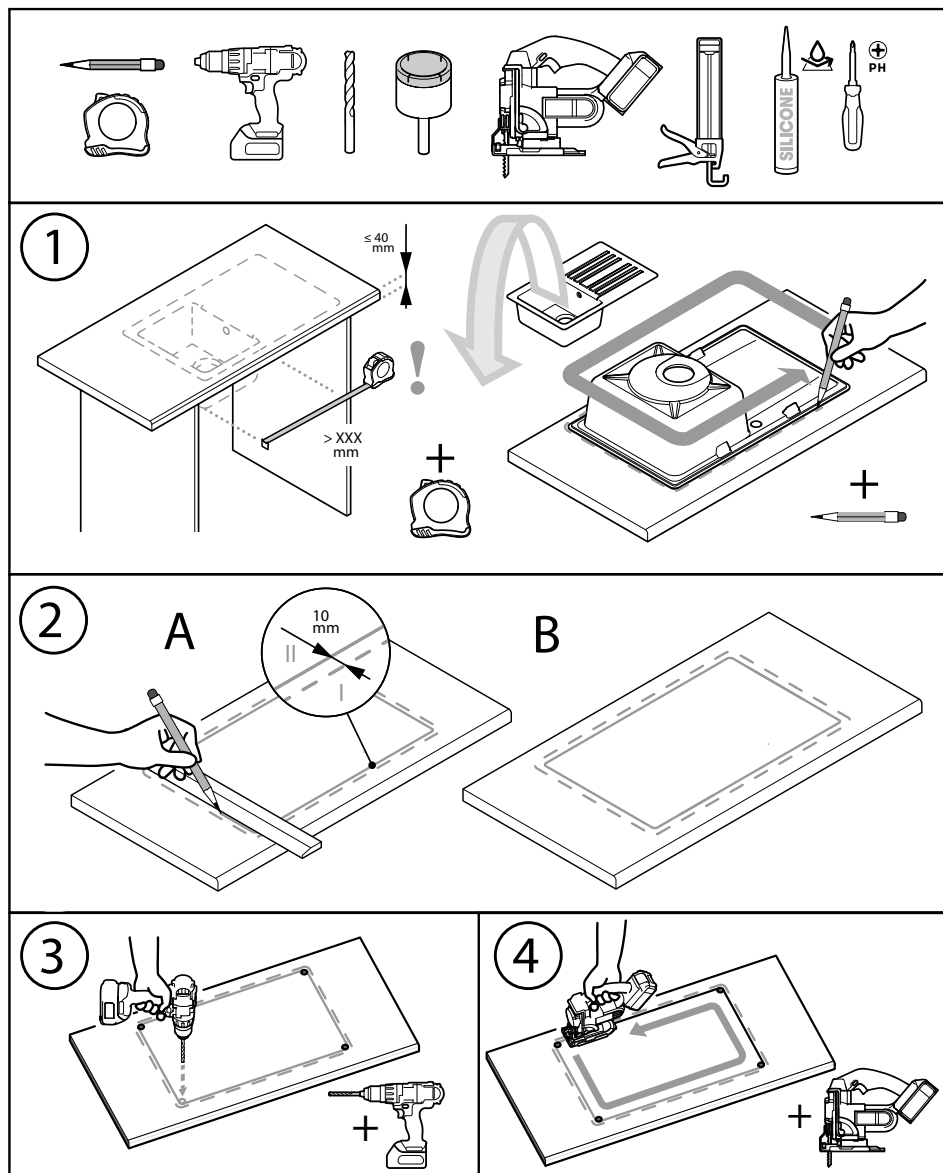
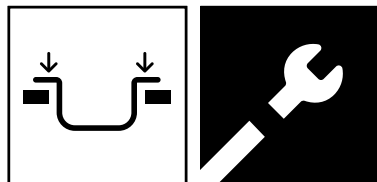
INSTALLATION
UNDERMOUNT

5



INSTALLING AS AN INSET

Sink is to be mounted from the top of the worktop, suitable for all material types of worktop.

INSTALLATION
INSET