

Features

- Minimum base cabinet width: 36" - 39" (36" may require cabinet modifications).
- 9-1/2-inch left depth and 7-1/2-inch right depth.
- No faucet holes.
- SilentShield Plus® sound-absorption technology helps maintain water temperature, reduces condensation, and decreases noise.
- Includes installation hardware.

Material

- 18-gauge stainless steel.

Installation

- Under-mount
- Extra-large/ medium bowls.

Recommended Accessories

K-6388-ST Bottom bowl rack (for extra large bowl)
K-6390-ST Bottom bowl rack (for medium bowl)
K-3278 Hardwood cutting board (for medium bowl)
K-3291 Colander (for medium bowl)
K-8801 Duostrainer sink strainer



For complete listing of available colors, go to kohler.com.

Codes/Standards

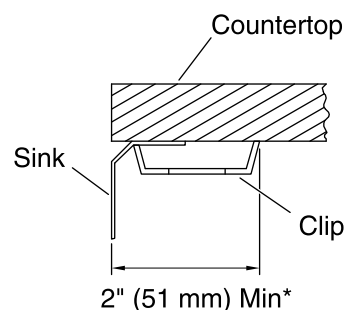
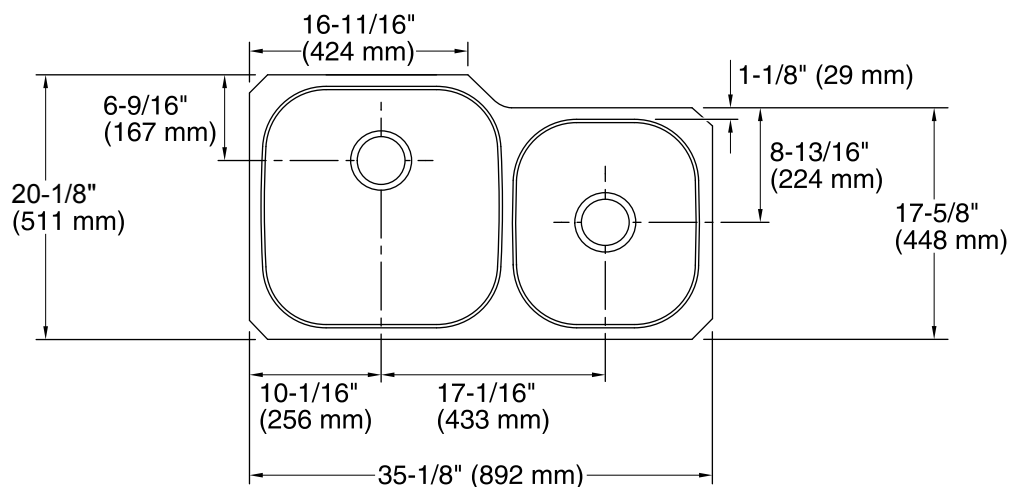
ASME A112.19.3/CSA B45.4

Lifetime Limited Warranty for KOHLER® Stainless Steel Sinks

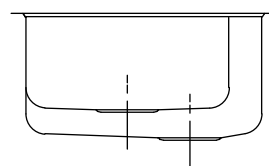
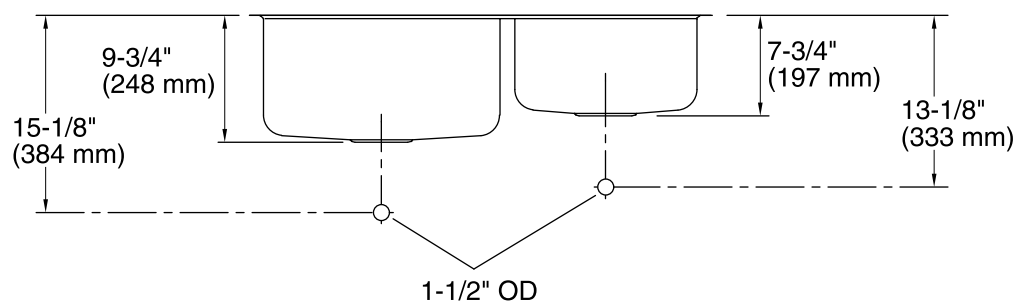
See website for detailed warranty information.

Product Specification

Kitchen sink shall be 35-1/8" (892 mm) in length and 20-1/8" (511 mm) in width. Kitchen sink shall be made of 18-gauge stainless steel. Kitchen sink shall be extra-large/medium bowls. Kitchen sink shall be without faucet holes. Kitchen sink shall be under-mount installation. Kitchen sink shall be KOHLER Model K-3356.



* Allow clearance around sink rim for clip attachment.



Technical Information

All measurements are nominal.

Bowl configuration:	X-Large/medium
Installation:	Under-mount
Bowl area (Left)	Length: 17-7/8" (454 mm) Width: 17-7/8" (454 mm) Bowl depth: 9-1/2" (241 mm) Water depth: 9-1/2" (241 mm)
Bowl area (Right)	Length: 13-3/4" (349 mm) Width: 15-3/8" (391 mm) Bowl depth: 7-1/2" (191 mm) Water depth: 7-1/2" (191 mm)
Template:	Under-mount, 1217909-7, required, included

Installation Notes

Install this product according to the installation guide.

Minimum base cabinet width 36" - 39" (36" may require cabinet modifications). Consult an installer for confirmation.