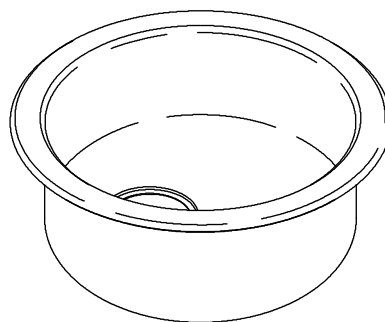


### Features

- 18-gauge stainless steel
- Top-mount or under-mount
- Single bowl
- Rounded bowl
- Includes SilentShield® sound-absorption technology
- Includes installation hardware
- 18-3/8" (467 mm) diameter (top-mount)
- 15" (381 mm) diameter (under-mount)

### TOP-MOUNT/UNDER-MOUNT SINK **K-3341** ALSO K-14302



### Codes/Standards Applicable

Specified model meets or exceeds the following:

- ASME A112.19.3/CSA B45.4
- ADA (K-14302)
- ICC/ANSI A117.1 (K-14302)

### Colors/Finishes

- NA: None applicable
- SBV: Satin Bronze

### Accessories

- CP: Polished Chrome
- ST: Stainless Steel

### Specified Model

Model	Description	Colors/Finishes
K-3341	Top-mount/under-mount – kitchen sink	<input type="checkbox"/> NA
K-14302	Top-mount/under-mount – bar sink	<input type="checkbox"/> SBV

#### Optional Accessories

K-6518	Wire rinse basket	<input type="checkbox"/> ST
K-8813	Stainless steel sink strainer with tailpiece	<input type="checkbox"/> CP

Countertop cutting boards and additional sink strainer options are available (refer to the Kohler Price Book)

### Product Specification

The round sink shall be 18-3/8" (467 mm) in diameter when installed as top-mount or 15" (381 mm) in diameter when installed as under-mount. Sink shall be made of 18-gauge stainless steel. Sink shall be single bowl. Sink shall include installation hardware. Sink shall include SilentShield sound-absorption technology. Sink shall be Kohler Model K-\_\_\_\_-\_\_\_\_.

# UNDERTONE®/LYRIC™

## Technical Information

Fixture*:	
Bowl area	Ø 15" (381 mm)
Water depth	7-1/2" (191 mm)
Drain hole	Ø 3-5/8" (92 mm)
*Approximate measurements for comparison only.	
Included components:	
Lug pack (top-mount)	7257
Clamp accessory pack (under-mount)	52047
Cutout template	113392-7

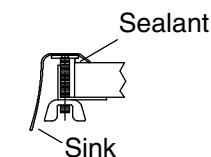
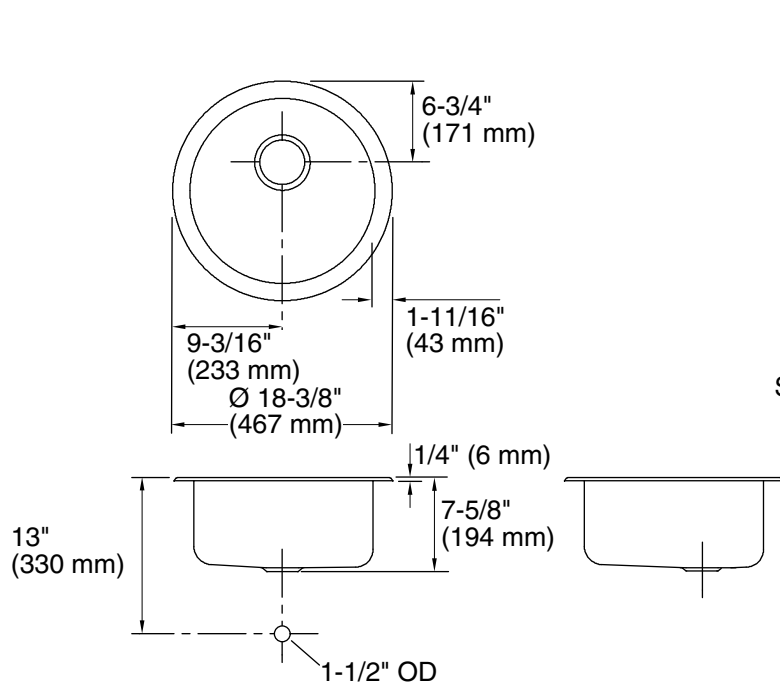
## Installation Notes

Install this product according to the installation guide.

Supplied bowl clamp assemblies require 1" (25 mm) minimum countertop thickness. Installer must supply hardware for thinner countertops.

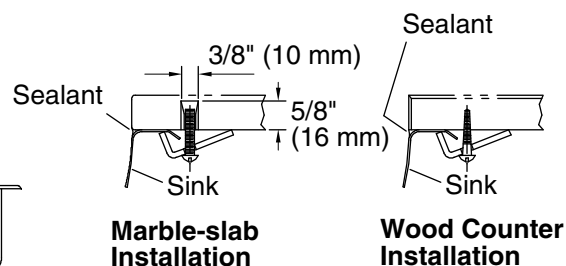
For multiple bowl under-mount installations, a minimum distance of 3-1/2" (89 mm) is required between bowls. Countertop supplier to determine required support.

Waterproof unprotected overhang area of the underside of wood counter.



**Top-Mount Installation**

**Kit #7257**



**Kit #52047**

## Product Diagram