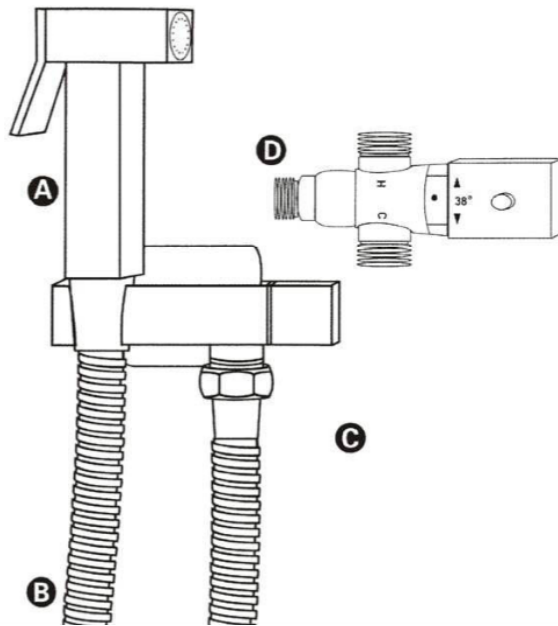


Parts Supplied-Square TMV Douche



A Spray Head x 1

B Hose x 1

C Valve with built in bracket x 1

D Thermostatic Mixer Valve x 1

Installation-Square TMV Douche

- Having established the position of the thermostatic mixer valve so it can be connected to both Hot and Cold water supplies. Hot connected to the outlet indicated by **H** and cold connected to the outlet indicated by **C**.

Note: Flush pipe work before fitting mixer valve.

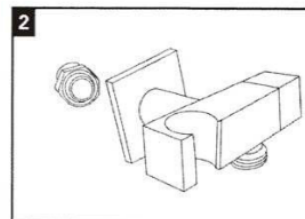
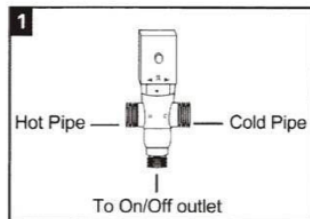
Note: Easily accessible service valve should be fitted to both hot and cold supplies for maintenance.

- Fit thermostatic mixer valve (**fig.1**)

Note: Factory set temperature 38°C can be adjusted to suit individual requirements

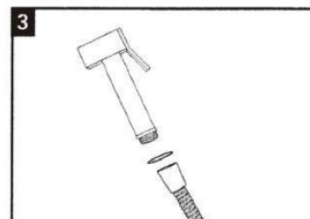
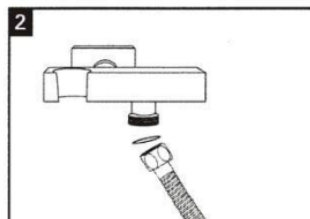
- The supply pipe work from the mixer valve to the valve with built in bracket can be exposed or concealed and must finish with a suitable 1/2" BSP female fitting (Not supplied)

- Fit valve with built in bracket to 1/2" BSP female fitting (**fig.2**) For concealed option insure shroud is fitted to thread.



Note! Other tools and materials may be needed depending on the specific site requirements.

- Connecting the hose and spray head. Connect the hexagon nut to the outlet of the valve making sure the sealing washer is in place. (**fig.2**) Screw remaining cone nut to the thread of the spray head, again making sure the sealing washer is fitted. (**fig.3**)



- Commissioning of Unit.

- Turn on water and check for leak.
- Check inlet connection.
- Turn on valve and check hose connections.
- Turn on spray head and check water spray.

Note: Always turn off valve when not in use.