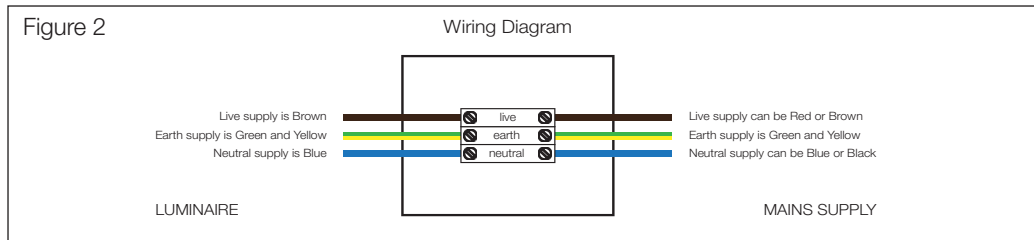




Figure 1



All installations must comply with guidelines which are based on a zonal concept. The diagram to the left illustrates this concept and must be followed to ensure the safe installation of bathroom lighting. These regulations apply to domestic installations only. Installations must be made in accordance with the current IEE wiring regulations and relevant building regulations. HiB recommends that all electrical bathroom products should only be fitted by a suitably qualified, Part P registered electrician. This product is IP44 rated and suitable for installation in Zone 2 and Outside Zones.



### Care Instructions

To preserve the high quality finish of your HiB product, please ensure you regard the following care and cleaning recommendations:

- wipe off all water spillages as soon as possible
- mirrors and glass can be cleaned with a proprietary cleaner using a soft cloth, taking care not to get excessive cleaner behind the mirror
- all other surfaces should be cleaned with diluted detergent, i.e. washing up liquid, and a soft cloth
- scourers and scouring agents should not be used, as these may cause damage to the surface of the product

HiB Ltd, Castle House,  
21-23 Station Road,  
New Barnet, Herts,  
EN5 1PH

t. 020 8441 0352  
f. 020 8441 0219  
e. sales@hib.co.uk  
w. www.hib.co.uk

©HiB Copyright: No part of this document may be reprinted or duplicated without HiB consent. All sizes and measurements are approximate, but we do try and make sure they are as accurate as possible. In the interest of continuous product development, HiB reserves the right to alter specifications as necessary. E & OE.

## Quality Bathroom Products

### LED Illuminated Cabinets - Fixing Instructions

Thank you for purchasing this HiB product. Please read through these instructions carefully and refer back to them during installation to ensure that your product is fitted safely and that it retains its high quality finish.

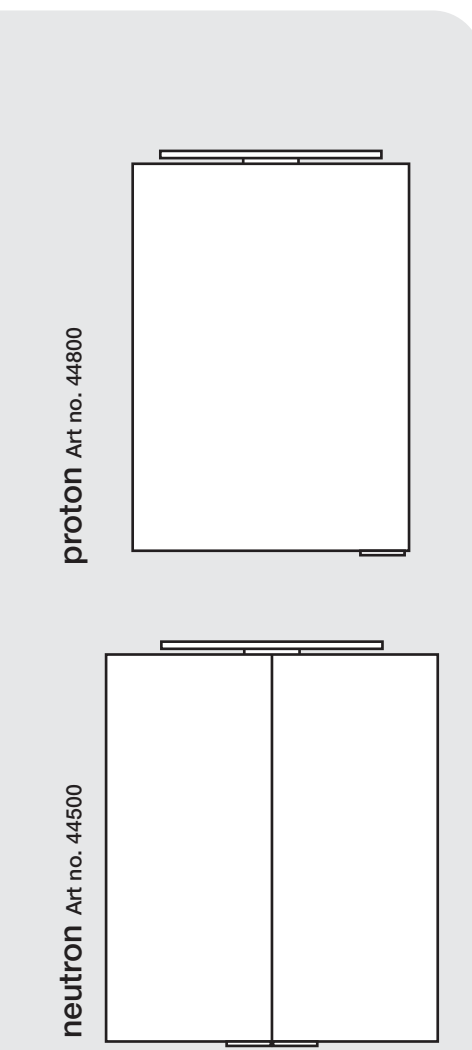
**Please retain this leaflet for future reference.**

### Electrical Safety Information

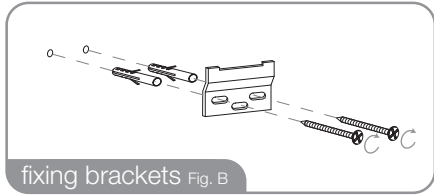
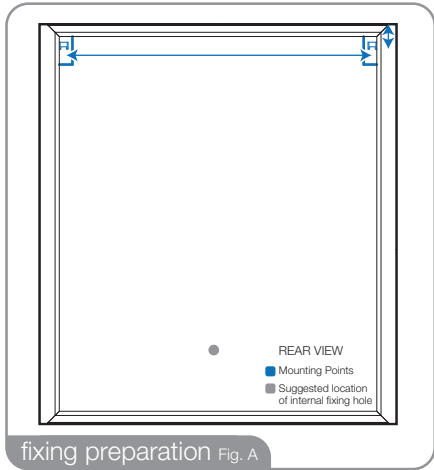
HiB recommends that all electrical bathroom products should only be fitted by a suitably qualified, Part P registered electrician in accordance with current IEE regulations.

Ensure mains power supply is switched off before starting installation.

Before drilling, ensure there are no hidden cables or pipes in the wall.



These products must be installed with a minimum distance of 150mm between the infra-red sensor switch and any surface or object to ensure correct operation of the sensor.

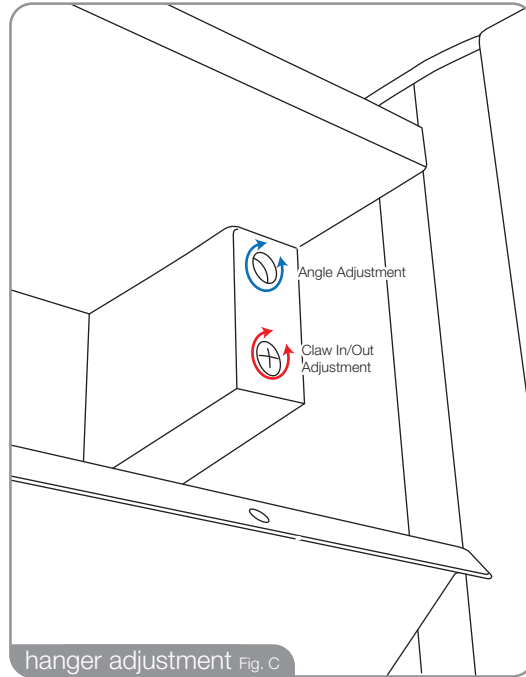


## Wall Hung Installation

**1)** Position the cabinet in a suitable location, (according to Figure 1 on the back page), ensuring that the domestic electrical mains supply is within reach of the electrical connection point of the cabinet. Carefully mark the position of the top of the cabinet using a soft pencil.

**2)** Remove the cabinet from the wall and using a spirit level, mark a horizontal line below the original pencil mark, taking into account the location of the mounting points. Place brackets on the new line paying attention to the distance of the mounting points. Mark the position of the holes using a soft pencil. (See fig. A)

**3)** Before drilling, ensure there are no hidden cables or pipes behind the mounting points. Drill the required holes in the marked positions. If drilling through tile, use a ceramic drill bit. Insert the wall plugs level with the surface of the wall. If fitting to a



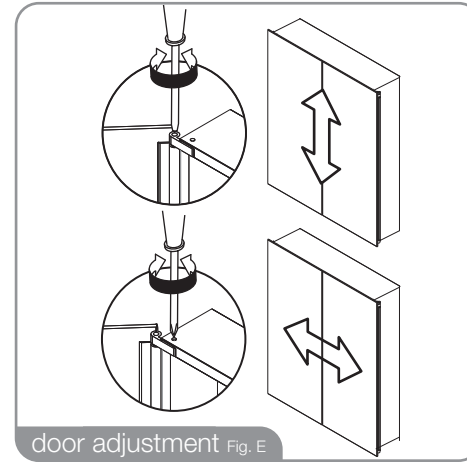
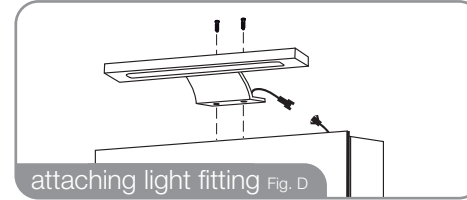
tilled surface, wall plugs should be inserted below the tile surface to avoid cracking. NB. For plasterboard walls, specialist fixings should be purchased, available from any DIY or hardware store.

**4)** Fix the bracket to the wall using the screws provided. (See Fig. B )

**5)** Open the cabinet door(s) and remove screws on front edge of the internal panel at the top. Place screws in a safe place.

**6)** Temporarily hang the cabinet ensuring claws on the hangers are securely located on the wall brackets. Using a spirit level adjust the angle of the cabinet via the screws on hangers (See Fig. C). Using a drill create a suitable hole for an internal fixing hole inside the cabinet (see Fig. A) and mark wall. Then remove cabinet from wall.

**7)** Drill a suitable hole in the marked location and



fit a wall plug (taking into account step 3).

**8)** Connect the domestic mains supply according to the wiring diagram on the back of this manual. (see Figure 2)

**9)** Re-hang cabinet, tighten screw on hangers (See Fig. C) and secure the base of the cabinet with supplied screw & screw cap.

**10)** Once fully secure close the internal top cover and secure with screws removed earlier.

**11)** Starting with the top shelf, insert the shelf supports in the desired position and fit the shelf. Follow procedure for remaining shelves.

**12)** Attach the LED light fitting on the top of the cabinet using the pre-drilled holes and the screws provided. Push the male and female electrical connections together until they 'click' (See Fig. D).

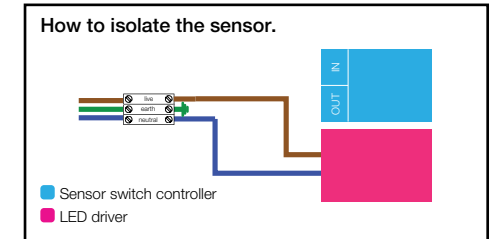
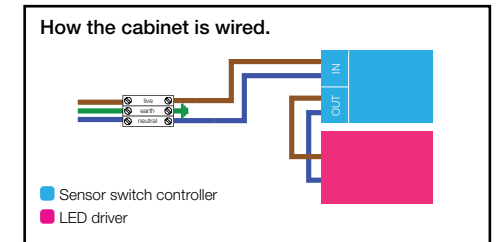
**13)** Door(s) can be adjusted if required via screws

on hinges. (See Fig. E)

## Operating Instructions

To turn illumination on or off, operate the sensor switch located at the bottom right side of the cabinet.

## How to Isolate the sensor so you can switch ON & OFF with a mains switch!



Re-wire the cabinet as shown in the diagram above. HiB recommends that all electrical bathroom products should only be fitted by a suitably qualified, Part P registered electrician.

**For further assistance on isolating the sensor please contact us.**

**Tel: 020 8441 0352**

**Email: sales@hib.co.uk**